

POLKA

A Polka Theatre production in collaboration
with Singapore Repertory Theatre

SRT
singapore repertory
theatre

the
little
company

★ **Social Story** ★

R

THE PEA AND THE PRINCESS



Illustration: @nathanreedillo

The PEA and the Princess

High kicks, huge twists and brand new fairytale endings.

It's time to tell the REAL story of The PEA and the Princess, one which no one has ever heard before.

Leap into a high velocity adventure, into the world of a Ninja Princess on a mega-mission, a practical Prince concocting the best inventions, a Queen with a slightly worrying crown obsession, and a very green baddy indeed.

Featuring super catchy songs, some familiar fairytale faces and a brand-new twist-in-the-tale, this a story that you definitely wouldn't want to sleep on!

Please note, this performance contains flashing lights, the use of haze, audience interactions and scenes that very young children may find scary.

Creative Team

Directed by **Jemma Last**
Written by **Rachel Barnett-Jones**
Composed by **Holly Mallett**
Set and Costume Designed by **TK Hay**
Lighting Designed by **Sherry Coenen**
Sound Designed by **Yvonne Gilbert**
Puppets Designed and made by **Maia Kirkman-Richards**
Animation by **Conor McMullin**
Voiceover by **John Last**

Cast

The Princess **Elise Zavou**
The Prince **Mohamed Bangura**
The Queen **Emily Jane Kerr**

Production Photography by Tasha Best

The Location

When you get to Polka Theatre, this is what it looks like:



When you enter through the main entrance, to your left will be the Box Office and the Shop. Please feel free to browse the shop whilst you wait.

Box Office



Shop



Café

When you enter through the main entrance, to your right will be the Café. We serve hot and cold food, pastries, sweet treats, and hot and cold beverages.



Main Theatre

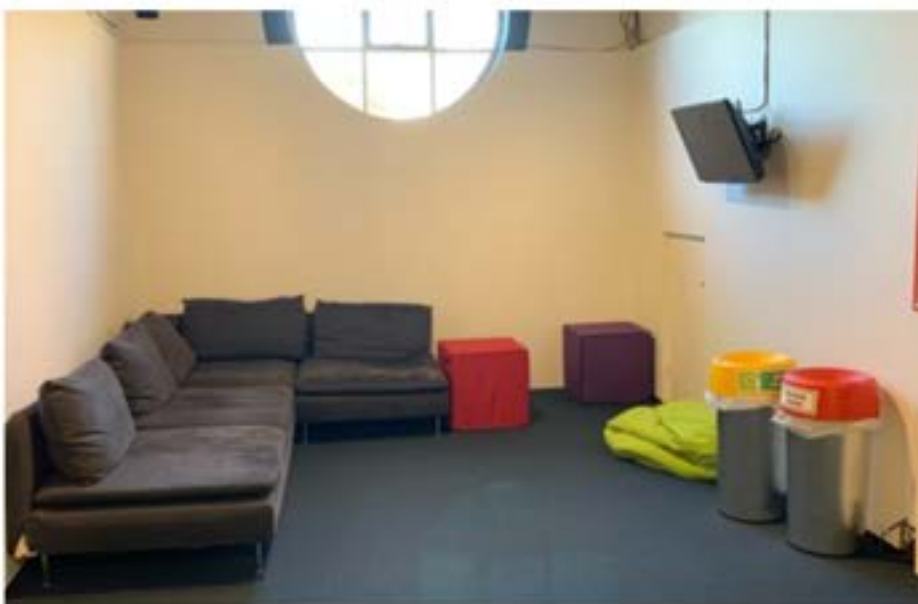
This is where the performance will take place. To get there, you will go up a set of stairs between the Box Office and the Play Den. The Polka Staff will show you where to go, and how to get to your seat.

This show offers a relaxed environment meaning you can move around the space, make noise or leave the auditorium at any time.

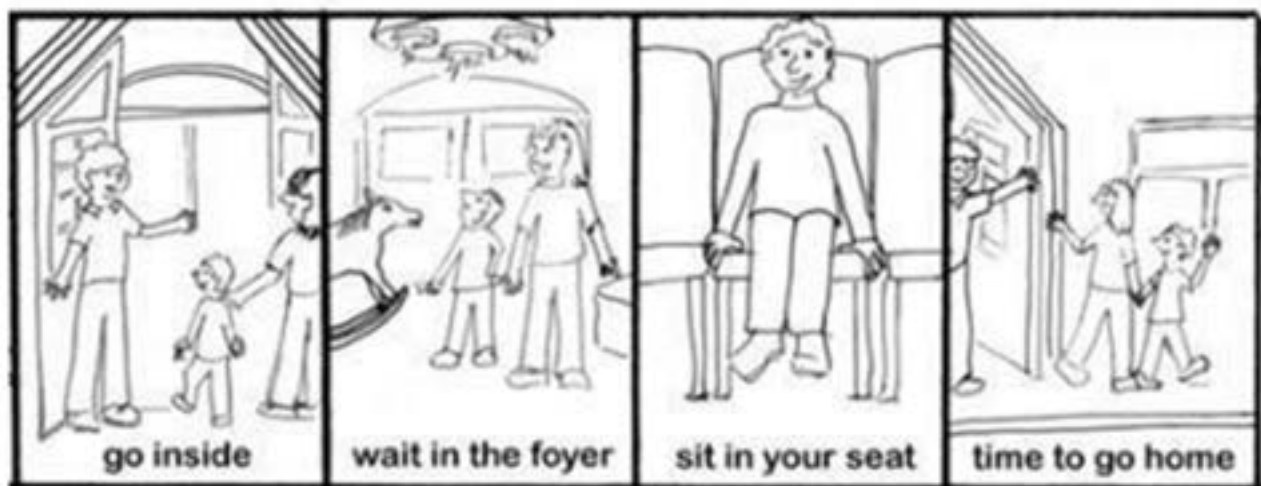


Chill Out Space

This is located outside of the Main Theatre upstairs. You can leave the theatre at any time and come back in when you are ready. There will be a TV monitor which will relay the live action happening on stage, so you don't have to miss anything.



Picture information strip- this is what you will do when you go inside:



To prepare you for your visit to Polka Theatre we have put together a synopsis - this is to help you to understand the story that you are about to see and prepare you for what to expect during the performance.

The performance will last approximately 55 minutes, with no interval.

Please note, we have ear defenders available at Box Office, should you need a pair.

The PEA and the Princess

This show has 3 actors and all some of the actors will play more than one role. They will change costumes to represent their change in character.

This is what the characters look like:

The Princess



The Prince



The Queen



This is the performance space and set as you first see it:



As you enter there is harpsicord and string music playing at a low level.

There are two large books, one of 'The Princess and the Pea' and one of 'Sleeping Beauty'.

There will also be a pile of books in the middle of the stage.

The lights will be purple.



During the show, the actors will interact with you. You are welcome to respond to characters performance, sing along and laugh or smile at any time.



During the show, you might see something that makes you feel sad or scared. You are allowed to feel sad or scared, that is ok.



If you see this symbol, it means there will be a loud or unexpected noise and you can put your fingers in your ears.



If you see this symbol, it means there will be projections, or something visual happening onstage that will help with the storytelling.



If you see this symbol, it means you will hear music or there will be a song.



If you see this symbol, it means you will hear a sound effect coming from the speakers.



If you see this symbol, it means there will be a change in lighting and you can cover your eyes.



If you see this symbol, it means the audience may clap, sing and dance. You can join in, too!

If you are watching our designated Relaxed Performance, some lights will be reduced or removed. The characters will not approach any audience members.

Pre-show - Introductions



At the start of the show, the actors will walk around the auditorium saying hello and introducing themselves to everyone. You can answer them if you like.

Prologue - Opening Song



When when the show is about to start, the opening song music will begin. There will be some lights on everyone in the audience and spotlights on the actors.



Once the actors go onstage, the lights will go darker in the audience.



During the song you will meet the characters. When you do, they will step forward with a spotlight on them.





Again, the characters might ask you questions, you can shout out an answer if you like.



When we meet the Prince during the song, the lights will turn yellow and green. And when we meet the Princess, they will turn completely yellow.



At the end of the song, the lights will turn purple and thunder and rain sound effects will play.



Scene One - The Castle at Night



The lights will go darker as this scene begins.



The Princess will begin talking to her friends - a bunny and a rabbit. You will meet these as small puppets and they will appear from behind the book on the right of the stage.



Then when the action moves to the castle. The Prince will appear in his pyjamas. He will be in a spotlight at the left of the stage.





When the Princess enters the castle, the sound of footsteps will play.



To represent going inside the castle, the actors will open the big book on the right, to reveal some bookshelves. Trumpets will play as this happens.



As the Queen makes the bed for the Princess, she sings a song. The lights will turn purple and there will be a disco ball above the audience.



During the song the lights will get a little brighter and the Queen will roll up the back 'book case' to reveal a bed with lots of mattresses. Behind this will be portraits of other Queens holding peas.





The Queen puts a small pea under the Princess' mattress. Every time this happens in the show, a 'ding' sound effect will play.



Towards the end of the song, the lights will turn a darker purple but go back to 'normal lighting' when the song is finished.



Shortly after the song has finished, there will be a blackout to change scenes. During the scene change an instrumental version of the opening song will play.



Scene Two - The Library



After every scene change, a cockerel crowing sound effect will play to signal the start of the next day.



When the scene starts, the Prince and Princess will be sat on piles of books.



The Prince and Princess decide to go to the library. This is shown by the second big book on the right being opened to reveal lots more books, cushions on the floor and a large, green, circular screen in the middle (this is called the PEA).





The PEA will have an animated face and be completely green on the screen. He will talk in a low, friendly voice and make computer sound effects. When he is first introduced, a trumpet sound effect will play.



The Prince and Princess will then sing a song called 'Welcome to the Library'.



When the Princess starts talking about the stories she wants to find, the lights will turn green.



Then, when the Princess calls the PEA 'rubbish', he will make a sad face and turn yellow.



Once the song has finished, the stage lights will get a little darker and the Prince will ask everyone in the audience to shout out stories the Princess might like to read. The lights in the audience will get brighter for this moment.



Then the action moves to the Queen. The lights will go down on the audience and on stage they will turn purple.



We soon move to the evening, when the lights will turn blue.



The Queen will reveal the Princess' bed, now with even more mattresses. As this happens, a drum roll sound effect will play.

Scene Three - Night-time Adventures



The Princess will get into bed and the lights will go dark everywhere on stage except the bedroom.



She will sing a song called 'Princess with a Problem'. During the start of this song, she will take off her tutu to reveal a jumpsuit and climb through one of the portraits in the bedroom.



The book which had the bedroom inside will then close as the action moves outside the Castle.



As the Princess' journey outside the castle is narrated, the sound of wind will play and the PEA screen will turn on.





As the Princess saves other Princesses, electric guitar music will play.



During this sequence, 'whoosh' sound effects will play when a witch uses her powers. There will be a crash and flashing lights when the spinning wheel get broken.



Throughout all of this, the PEA screen will beep and turn yellow.



As the scene ends there will be blackout to change the scene, with the same opening instrumental music playing as before.



Scene Four - The Castle During the Day



The book on the left will open again. Harpsichord music will play while the Queen tells the Prince about putting peas under the Princess' mattress.





When the Prince and Princess go to the Library, a 'whoosh' sound effect will play.



However, the PEA screen won't talk to them now! It turns red then switches off.



The Prince and Princess go outside to the garden. The book on the left will close to show they are outside.



As the Prince and Princess are playing together, electric guitar music will play and the sound of birds tweeting will play.



They will then sing the song 'I Think You're Funny' and the lights will turn brighter.



As the song ends, the stage lights will turn darker green, and then blue when the Queen says it's time for bed.





Once again, the left book will open and the bedroom revealed with a drum roll, showing even more mattresses.



Scene Five - Night-time Adventures, Part Two



The Princess will again leave the bedroom via the portrait on the wall. The lights will turn blue and then the left book will close.



This time, the Princess will go out into the audience and the same electric guitar music will play.



During this sequence a giant apple will hit the Prince on the head and we will hear a big 'bang' sound effect.



Throughout all of this, the PEA screen will be on again, but this time it will have an angry face and make lots of beeping noises.





A blackout scene change will then take place, with the same opening instrumental music.

Scene Six - The Next Morning



The lights will be neutral at the start of the scene until the Prince's 'D.A.D alarm' goes off with an alarm sound effect and red, flashing lights.



Scene Seven - Baddies in the Library



In the Library, the PEA's voice turns fuzzy and his screen is pulsing red.



Then, baddies start invading - these are just paper puppets which pop up in books that the actors hold. It is okay if you find this moment scary.





During this, the lights will turn red and we the electric guitar music will play.



When the giant pops up from the book, he will say 'Fe Fi Fo Fum'; when the witch pops up, she will cackle; when the pirate pops up, the sound of a swishing sword will play.



Then a larger dragon puppet will pop up from behind the right book and there will be haze. It's okay if you find this moment a little scary too.



As the Queen enters, they will sing the song 'The Library has a Problem' with the dragon still on stage.



When the song ends, the characters will ask for the audience's help. The lights will become brighter on the audience. You can shout and respond to their questions if you'd like.





After the audience has helped get rid of the dragon, the PEA will get sad and the screen will turn blue.



Once the Princess makes the PEA happier, he turns green again. As the scene ends, the lights on the stage will turn blue.



Scene Eight - Epilogue



After the actors have left the stage, a small puppet of a pea in a pod will appear on the Princess' bed and talk in a high pitched voice. The pea will be lit by a spotlight.



The actors will all come back on stage and sing the final song. During the song they will talk to everyone in the audience and you can sing along with them if you want to.



During this, the lights will get brighter in the audience and the disco ball will spin above the audience's heads again.





As the song ends, the lights will turn pink, the books will close and the actors will bow.



The End

The show has now finished. At the end of the show everyone will clap their hands, which is to show the actors and production team that they have enjoyed the show.

Thank you for coming - we hope you enjoyed the show!

Discover Polka Theatre

Whether you're seeing a show or getting creative in a workshop, relaxing in the Café, or exploring our free-to-access indoor and outdoor play spaces, there's something for everyone at Polka.

Connect with us on social media [@polkatheatre](https://www.instagram.com/polkatheatre)



Polka Theatre
240 The Broadway, Wimbledon, London, SW19 1SB
Box Office 020 8543 4888
boxoffice@polkatheatre.com
polkatheatre.com



© Polka Theatre 2004 – 2024 | Polka is a registered charity no. 256979